

# TEKA 174 table

R | O | D | A

**Design**  
Gordon Guillaumier

**Description**  
Table for outdoors

**Structure**  
Teak wood contains a natural oily resin which makes it extremely resistant to weather, temperature, parasite attacks and insects.  
The exposure outdoor creates a 1/2 mm-thick oxidation patina on the wood surface which favors its discoloration to a silver-grey color; this change does not affect its original characteristics in any way. The grey patina can be avoided or removed with the correct maintenance

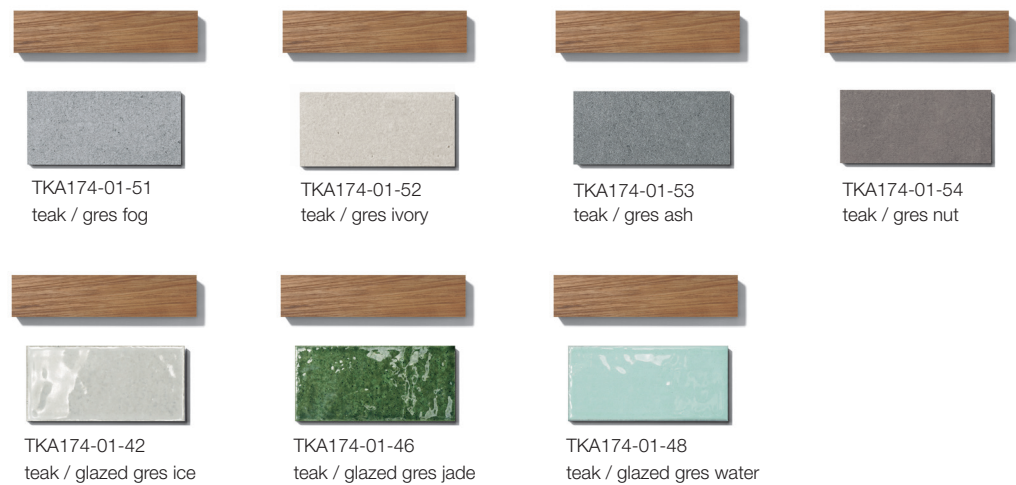
**Top**  
Gres  
A hardwearing material obtained from compacting 99% pure materials such as minerals and clay at a high temperature (around 1250°) without the addition of synthetic resins or other chemical substances. The non-porous surface has a liquid absorption capacity of less than 0.5% so the material will be frost-proof, resistant to any type of stain and extremely resistant to surface abrasion.  
The compactness of the material and the quality of the minerals used in its production make it very resistant to impact and bending (2mm tolerance per linear metre).  
The material is Class A1 fire retardant and does not contain chlorine, asbestos or any other environmentally harmful substance.

Glazed gres  
Glazed gres is obtained by subjecting gres to a special manufacturing process. After heating the material, the stoneware tile is dipped in tanks containing crystalline enamel in liquid form before being fired for the second time to vitrify the enamel. The material is Class A1 fire retardant and does not contain chlorine, asbestos or any other environmentally harmful substance.

**Weight**  
Structure: 105 kg

**Storage Cover**  
Available

## Finishes

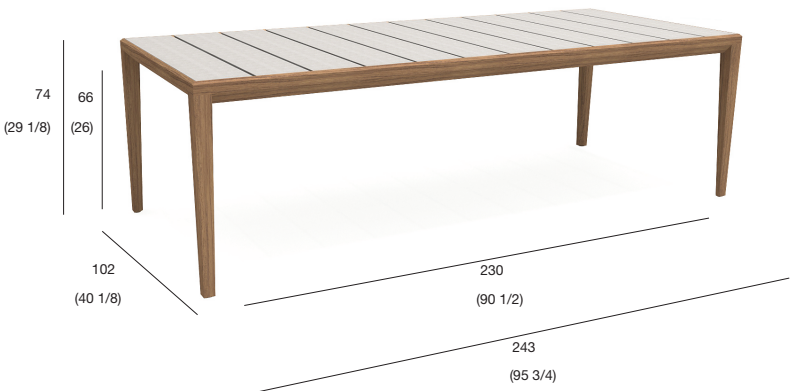


## Maintenance

**Teak**  
- In humid conditions, teak may release some reddish oil, which can cause stains on the surface. For normal cleaning, use a soft cloth (not in microfiber), fresh water and SUNDECK SOAP.  
- use SUNDECK WOOD OIL LIGHT, a nutrient and protective oil, on the new product to avoid the superficial oxidation.  
- use GREY OFF every 2/3 years to remove the grey patina due to the oxidation of the surface.

After the treatment with GREY OFF, wash the furniture with water and SUNDECK SOAP and oil it with SUNDECK WOOD OIL LIGHT.  
- In case of deep spots hard to clean with SUNDECK SOAP, it is recommended to sand the surface uniformly before using GREY-OFF; in any case, do not use GREY-OFF more than once a year.  
- Always avoid abrasive products or aggressive chemical solvents.

**Gres**  
Use a damp cloth wrung out in water; in the event of having to remove obstinate stains, use a universal detergent. Never use abrasive materials, acid substances or aggressive chemical solvents.



## TEKA 173 table

R | O | D | A

### Design

Gordon Guillaumier

### Description

Table for outdoors

### Structure

Teak wood contains a natural oily resin which makes it extremely resistant to weather, temperature, parasite attacks and insects. The exposure outdoor creates a 1/2 mm-thick oxidation patina on the wood surface which favors its discoloration to a silver-grey color; this change does not affect its original characteristics in any way. The grey patina can be avoided or removed with the correct maintenance

### Top

#### Gres

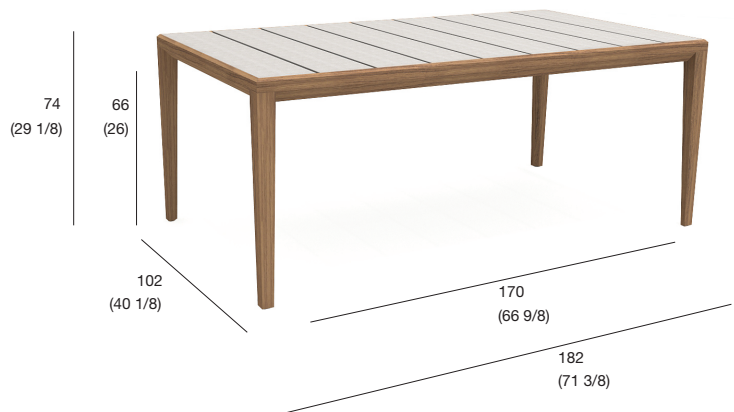
A hardwearing material obtained from compacting 99% pure materials such as minerals and clay at a high temperature (around 1250°) without the addition of synthetic resins or other chemical substances. The non-porous surface has a liquid absorption capacity of less than 0.5% so the material will be frost-proof, resistant to any type of stain and extremely resistant to surface abrasion.

The compactness of the material and the quality of the minerals used in its production make it very resistant to impact and bending (2mm tolerance per linear metre).

The material is Class A1 fire retardant and does not contain chlorine, asbestos or any other environmentally harmful substance.

#### Glazed gres

Glazed gres is obtained by subjecting gres to a special manufacturing process. After heating the material, the stoneware tile is dipped in tanks containing crystalline enamel in liquid form before being fired for the second time to vitrify the enamel. The material is Class A1 fire retardant and does not contain chlorine, asbestos or any other environmentally harmful substance.



### Weight

Structure: 81 kg

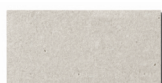
### Storage Cover

Available

### Finishes



TKA173-01-51  
teak / gres fog



TKA173-01-52  
teak / gres ivory



TKA173-01-53  
teak / gres ash



TKA173-01-54  
teak / gres nut



TKA173-01-42  
teak / glazed gres ice



TKA173-01-46  
teak / glazed gres jade



TKA173-01-48  
teak / glazed gres water

### Maintenance

#### Teak

- In humid conditions, teak may release some reddish oil, which can cause stains on the surface. For normal cleaning, use a soft cloth (not in microfiber), fresh water and SUNDECK SOAP.
- use SUNDECK WOOD OIL LIGHT, a nutrient and protective oil, on the new product to avoid the superficial oxidation.
- use GREY OFF every 2/3 years to remove the grey patina due to the oxidation of the surface. After the treatment with GREY OFF, wash the

furniture with water and SUNDECK SOAP and oil it with SUNDECK WOOD OIL LIGHT.

- In case of deep spots hard to clean with

SUNDECK SOAP, it is recommended to sand the surface uniformly before using GREY-OFF; in any case, do not use GREY-OFF more than once a year.

- Always avoid abrasive products or aggressive chemical solvents.

#### Gres

Use a damp cloth wrung out in water; in the event of having to remove obstinate stains, use a universal detergent. Never use abrasive materials, acid substances or aggressive chemical solvents.